



# IT Governance & Risk Update

Dr. Sharyne A. Miller  
Chief Information Officer

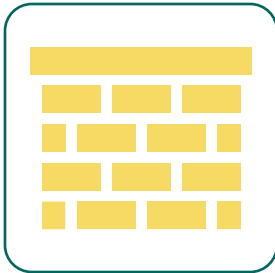
April 24, 2025

# Agenda

- Overview of Information Security Strategies
  - Security by the Numbers
  - Cyber Threat Intelligence Hub
- Understanding Governance, Risk, and Compliance
  - Seahawk Insights Portal
  - Campus Software Inventory
  - Vendor Risk Management
  - Accomplishments and Initiatives

# Information Security by the Numbers

IT Security is charged with safeguarding the confidentiality, integrity, and availability of all information processed, stored, or transmitted using university electronic resources.



## Firewall

In 24 hours, the firewall blocked:

- 96,893,506 malicious connections
- 14,434,171 malicious actors



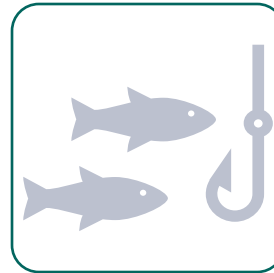
## Security Events

In the past 30 days, over 850 cybersecurity event and incident investigations completed



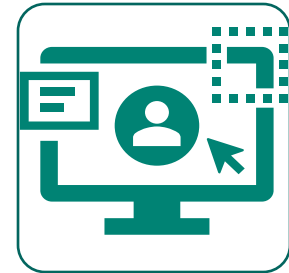
## Vulnerabilities

53 vulnerability tickets have been resolved since January 2025



## Phishing

More than 100 emails submitted to the ITS Phishing inbox in the last 30 days.



## Security Awareness

53% completion rate

This number continues to rise as reminder emails are sent across campus.

# Information Security – Threat Intelligence

## The challenge:

- Securing **64,700** Active Directory accounts and 11,000 devices against 731 known attack behaviors
- Equates to  **$11 \times 10^{211}$**  possible attack patterns. That's an 11 followed by 211 zeros

## The approach:

- Prioritize risks by identifying, tracking, and defending against critical threats
- Utilize tools to combat common tactics employed by threat actors
- Engage in training designed to correlate with real-world threats
- Mature investigation techniques that target specific threat vectors

## Cyber Threat Intelligence Hub

The Cyber Threat Intelligence Hub interface displays a dashboard with several key sections:

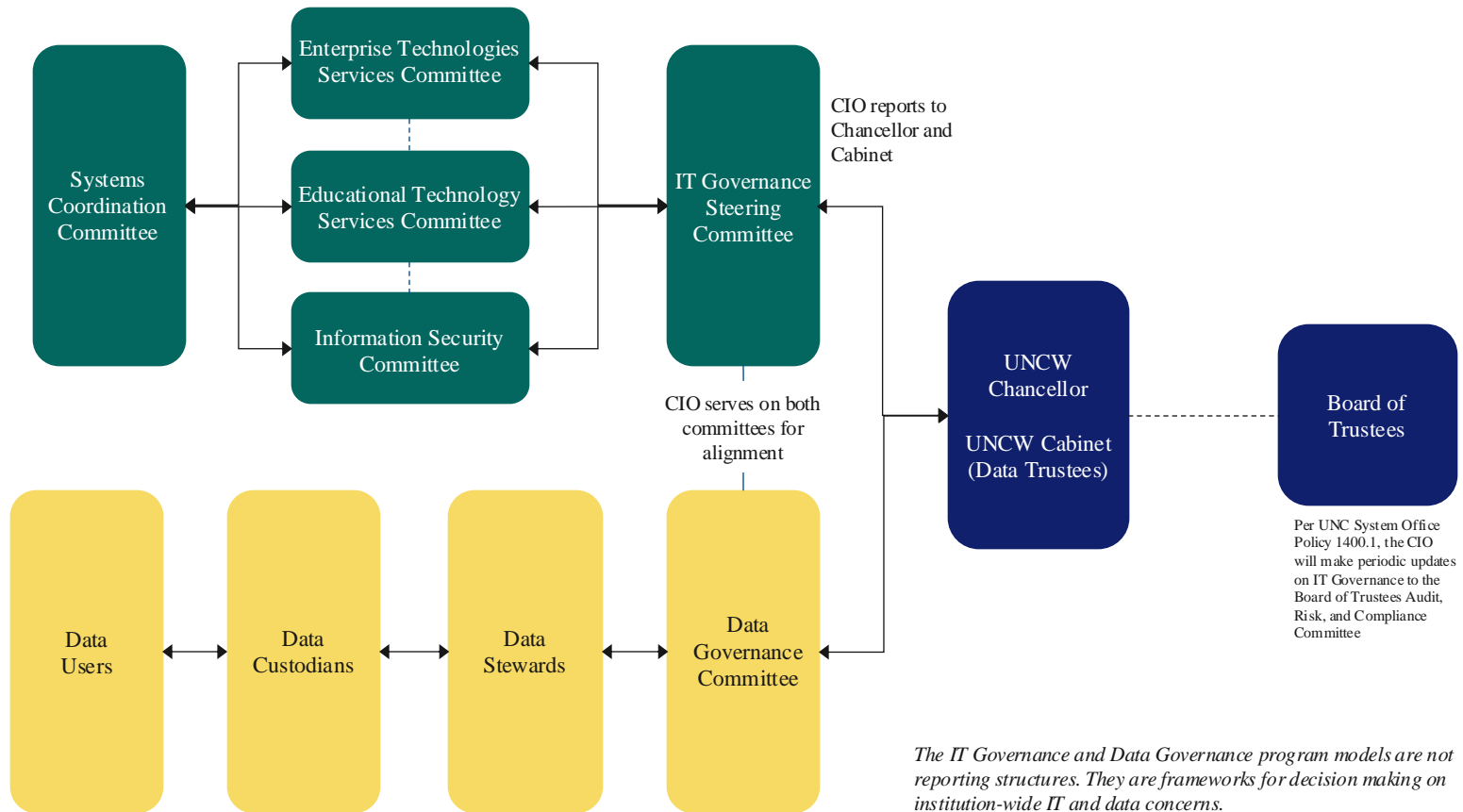
- Upcoming Adversary Holidays:** A calendar view showing upcoming holidays for various threat actors, including the Birthday of Kim Il-sung (North Korea) on April 15, Good Friday (Nigeria) on April 18, and Easter Monday (Nigeria) on April 21.
- Logos and Tools:** Logos for Slack, SANS, and USA SPENDING.gov are visible, along with text indicating their affiliations: Slack | REN-ISAC, SANS | Internet Storm Center, and UNCW Federally Funded Research.
- Office of Information Security | CTI Indicator Submission Form:** A form for submitting indicators of compromise, including fields for Date of Activity and a Submit Indicators of Compromise button.
- Table of Indicators:** A table listing various indicators and their status:

UNCW Name	PEIR Name	Microsoft Name	CrowdStrike Name
Akira	Akira	NOT TRACKING	Punk Spider
Andarrel	Andarrel	Onyx Sleet	Silent Chellima
APT17	APT17	Heart Typhoon	Aurora Panda
APT18	APT18	Checkered Typhoon	Deep Panda
APT20	APT20	Midnight Dragon	Gang Panda
APT37	APT37		

Below the table, there are two buttons: "Stay informed on Current Threats" and "Current info from Cyber Resources".

# Governance, Risk, and Compliance

## IT & Data Governance Structures





# Governance, Risk, and Compliance

## Seahawk Insights Portal

### Public Dashboards



[View Public Dashboards](#)

The publicly available dashboards provide a comprehensive overview of enrollment trends, freshmen and new transfer admissions & performance, financial aid statistics, degrees awarded, and strategic performance metrics. Dashboards here are created by either UNCW or the UNC System.

### UNCW Dashboards



[View UNCW Dashboards \(Restricted\)](#)

Includes dashboards curated by UNCW staff and partners to provide insight for operational data and trends regarding student admissions, enrollment, course success, retention, graduation, and financial aid, using the UNCW Enterprise Data Warehouse.

### UNC System Insight Dashboards







[View UNC System Insight Dashboards \(Restricted\)](#)

Includes dashboards curated by UNC System Data Analytics which use snapshots of data to analyze trends over time for student admissions, enrollment, retention, and graduation, as well as analysis of IPEDS staff & faculty data.

# Governance, Risk, and Compliance

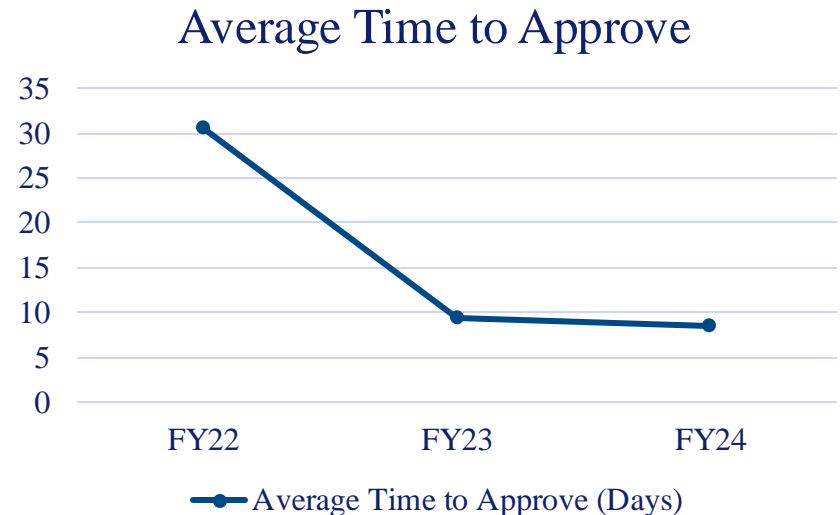
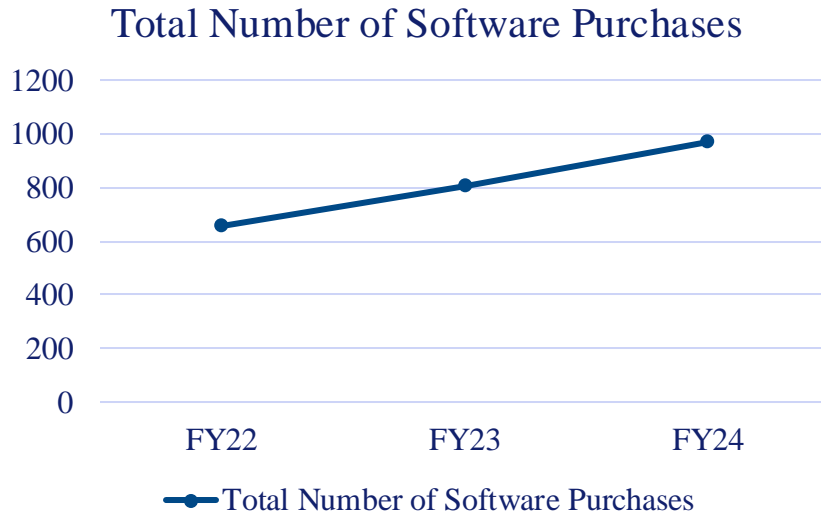
## Coming soon – Campus Software List

 Software Title	 Keywords	 Platform Availability	 License Type
Kahoot!	polling	Web-based	Departmental Purchase
Whova	scheduling, conference management, communication	Web-based	Departmental Purchase
Sched	scheduling, conference management, communication	Web-based	Departmental Purchase
Rev.com	transcription, research	Web-based	Departmental Purchase
Cyberduck	cloud server file transfer	Windows Mac	Free
Mathematica	computation, data analysis, visualization	Windows Mac Linux	Available to Campus
Matlab	data analysis, research, signal and image processing	Windows Mac Linux	Available to Campus
R	statistical analysis, data analysis, research	Windows Mac Linux Horizon	Free
RStudio	statistical analysis, data analysis, research	Windows Mac Linux Horizon	Free
Zotero	research, citation management	Windows Mac Linux	Free
Read&Write	literacy support	Windows Mac	Free
Tableau Reader	data visualization	Windows	Available to Campus
G Power	statistical analysis, research	Windows	Available to Campus

# Governance, Risk, and Compliance

## IT Vendor Risk Management Program

### Fiscal Year 2022 – 2025 Trends





# Governance, Risk, and Compliance

- Recent Accomplishments:
  - 01.250 Data Governance and Management Policy updated
  - New Data Trustee and Data Steward appointments
  - Data Classification Matrix review and updates
- On-going & Future Initiatives:
  - IT risk alignment with Enterprise Risk Management
  - University privacy resources webpage
  - Campus approach to responsible use of AI

A close-up photograph of a green parrot's tail feathers, showing the intricate pattern and texture of the plumage. The feathers are a vibrant green with darker green and black markings. The background is a solid teal color.

Thank You!